

# LYNX

## Pan & System

LYNX,  
This small & robust pedestal packs all the benefits of our precision positioning mechanisms into a small economic package.

LYNX system introduces high ratio of output torque to self-weight, giving the advantage of being portable while keeping its robustness. Built-in control electronics with designated software provides precise and smooth motion at various speeds.

LYNX has a self-lock mechanism which will guarantee the pedestals position even in case of a power-off or strong winds.



STANDARD



HIGH PERFORMANCE



**PAYLOAD**

25 kg – 40 kg



**POSITION ACCURACY**

$\pm 0.1^\circ$



**SPEED**

0.01 - 20/40  $^\circ$ /Sec



**OPERATIONAL TEMPERATURE**

-40  $^\circ$ C ~ +55  $^\circ$ C

## | General Specifications

Type	L-Shape
Payload Type	Antenna / Camera / Radar / Satellite
Azimuth / Pan movement	Nx360° or up to 345°
Elevation / Tilt movement	Up to 360°
Self-Weight	~10.5 kg
Control mode	Speed / Position
Communication	Ethernet TCP / RS232 / RS422 / RS485
Environmental protection	IP65, Temperatures, Vibration. Icing & more...

Version Type	STANDARD	HIGH-PERFORMANCE
Power consumption	24V & 4Amp	36V & 6Amp
Max Payload (balanced)	40 kg	25 kg
Max Acceleration	100 °/Sec <sup>2</sup>	100 °/Sec <sup>2</sup>
Speed (balanced)	0.01-20 °/Sec	0.01-40 °/Sec
Position Accuracy	±0.1 °	±0.01 °
Position Sensor Encoder	Incremental	Incremental
Resolution	0.0007 °	0.000036 °

## | Stabilization systems

Version Type	STANDARD	HIGH-PERFORMANCE
Stabilization Accuracy	±1 °	±0.5 ° / ±0.1
Stabilization Sensor	IMU / FOG	IMU / FOG

## | Tracker systems

Version Type	STANDARD	HIGH-PERFORMANCE
GPS Stabilization by Datum point	±1 °	±0.5 ° / ±0.1
GPS Units	LLA/UTM	LLA/UTM



**Contact us at:**

CAPTURE SYSTEMS LTD,  
Ravnitzky St.6, Petach Tikva, Israel  
Phone: +972-3-3038108  
Fax: +972-3-6200621  
sales@capture-sys.com  
www.capture-sys.com

## | Environmental Specification

Storage Temperature	-40°C ~ +70°C
Operational Temperature	-40°C ~ +55°C
Humidity	+32°C to +55°C @ 95 ±4 %RH

## | Salt Fog Exposure

Salt Solution Concentration	5±1 %
Salt Fog PH	6.5 to 7.2
Salt Fog Fallout Rate	1-3 ml/80cm <sup>2</sup> /hr
Duration	48 hr
Temperature	+35°C ±2°C

## | Salt Fog Drying Period

Temperature	+25°C ±10°C
Duration	48 hr
Humidity	<50 %RH

## | Solar Radiation

Temperature	+32°C to +49°C
Max Intensity	1120 W/m <sup>2</sup>
Cycles	3

## | Blowing Dust

Wind Velocity	8.9 m/sec
Dust Concentration	10.6±7 g/m <sup>2</sup>
Relative Humidity	<30 %
Temperature	TEST 1: 25 °C      TEST 2: 70 °C

## | Blowing Rain

Wind Velocity	18 m/sec
Rain Rate	>1.7 mm/min
Droplet Size Dia.	0.5 to 4.5 mm
Duration	30 min/face
No. of Faces	4

Pictures are for illustration purposes only.



### Contact us at:

CAPTURE SYSTEMS LTD,  
Ravnitzky St.6, Petach Tikva, Israel  
Phone: +972-3-3038108  
Fax: +972-3-6200621  
sales@capture-sys.com  
www.capture-sys.com

## | Icing

Temperature	-10 °C
Ice Thickness	37 mm

## | Vibration

Axes	3 (X, Y, Z)		
Vibration Level	X = 2.4 grms	Y = 1.3 grms	Z = 3.6 grms
Frequency Range	5 – 500 Hz		
Vibration Time per Axis	60 min		

## | Blowing Sand

Wind Velocity	18 m/sec
Sand Concentration	1.1 ± 0.3 g/m <sup>3</sup>
Humidity	<30 %RH
Temperature	+55 ± 2 °C
No. of Faces	1
Duration	90 min/face

## | Mechanical Shock

Axes	3 (±X, ±Y, ±Z)
Shock Form	Saw-Tooth
Shocks per Axis	6 (3 each direction)
Pulse Duration	11 mSec
Total Shocks	18
Shock Amplitude	40 g

Pictures are for illustration purposes only.



**Contact us at:**

CAPTURE SYSTEMS LTD,  
 Ravnitzky St.6, Petach Tikva, Israel  
 Phone: +972-3-3038108  
 Fax: +972-3-6200621  
 sales@capture-sys.com  
 www.capture-sys.com

## | Stabilized Version

Stabilization Accuracy	±0.1 ° - ±1 ° (*payload & mechanics dependent)
Stabilization Sensor	<p>IMU:</p> <ul style="list-style-type: none"> <li>- Gyro range: ±2,000°/Sec</li> <li>- Accelerometer range: ±16g</li> <li>- Magnetometer range: ±2.5Gauss</li> </ul> <p>FOG:</p> <ul style="list-style-type: none"> <li>- Gyro range: ±490°/Sec</li> <li>- Accelerometer range: ±10g</li> </ul>

## | Tracker Version

GPS Stabilization Accuracy	±0.1 ° - ±1 ° (*mechanics and antenna spread dependent)
GPS Sensor	<ul style="list-style-type: none"> <li>- Updates Rate: 5Hz</li> <li>- Receiver Type: GNSS</li> <li>- Static Accuracy (Heading): 0.3° RMS</li> <li>- Static Accuracy (Pitch / Roll): 0.5° RMS</li> <li>- Dynamic Accuracy (Heading): 0.3° RMS</li> <li>- Dynamic Accuracy (Pitch / Roll): 0.1° RMS</li> </ul>

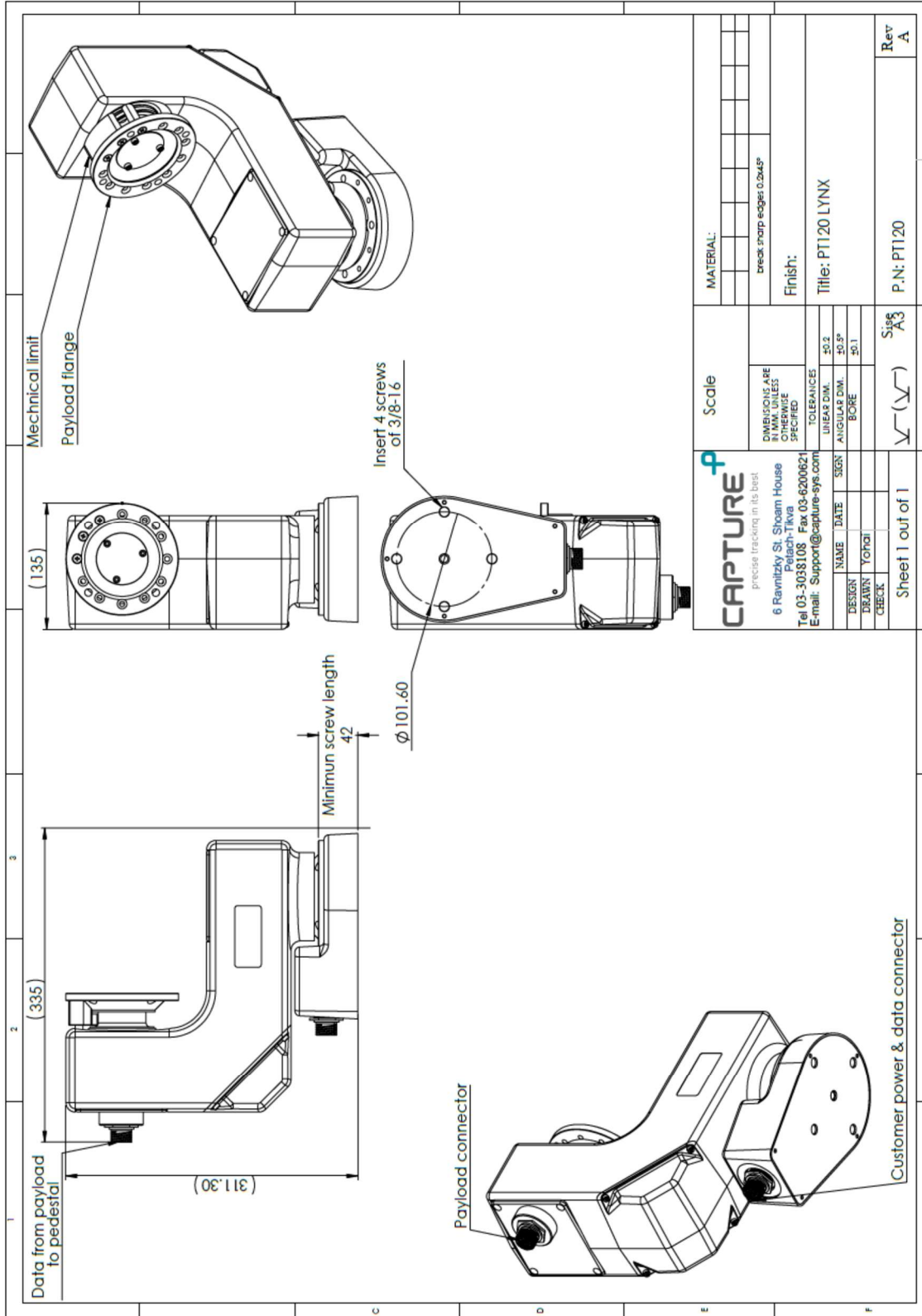
## | GUI Pannell

Parameter	Specification
Communication	Ethernet (TCP)
Operation mode	Manual / Stabilized / Tracker
Control mode	Speed / Position
Operation	Manual arrows controlled by user
Presets	Up to 15 saved points
Targets	Up to 15 saved GPS targets
Register Status	Online state of system registers
Software limit switches	User defined software limit switches for both axes
Homing	Homing position declaration
Scanning modes	Zigzag, Square and Snake
IP Setting	Ability changing system IP addresses & port



**Contact us at:**

| MICD



Pictures are for illustration purposes only.



**Contact us at:**

CAPTURE SYSTEMS LTD,  
 Ravnitzky St.6, Petach Tikva, Israel  
 Phone: +972-3-3038108  
 Fax: +972-3-6200621  
 sales@capture-sys.com  
 www.capture-sys.com