

COBRA-SHIELD W/J

7.62/12.7mm

Remote controlled Weapon System



COBRA is a cutting-edge Remote-Controlled Weapon System that can be mounted on any type of vehicle or platform.

Capable of detecting various types of Small Unmanned Aerial Vehicle Drones (SUAVDs) within a range of up to 11 kilometers.

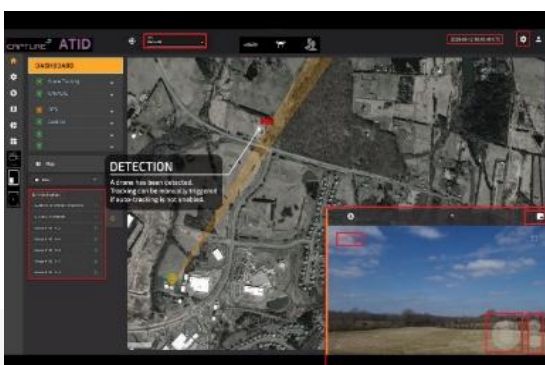


* The picture is for illustration purpose only, weapon and ammunition are not provided.

Key Features

- cUAS All-in-One System Drone Detection UP 11 km
- Operates up to 50 caliber (12.7) machine guns
- Equipped with Electro-Optical Gimbal IO/IR
- Multi classification capability in Realtime
- 360° tracking system, GEO Heading
- Operating in Ku band
- Jamming: 9 Channels 0.43Ghz-5.8Ghz
- Stabilized system - Designed for dynamic or static operation, Inertial stabilization
- GUI detection and tracking with different modes: Manual | Semi Auto | Auto
- Lightweight and compact gimbal
- Environment temperature range: -40° - +60°

Equipped with a built-in C2 graphical user interface, and powered by AI analytics



- Picture in picture video
- Automatic object tracking
- Moving map software

| System parameters

GENERAL	
Dimensions	103 x 124 x 80 cm ; 135 x 124 x 80 cm (M240) ; 178 x 124 x 80 cm (M2).
Rotation Diameter	0.83 m ; 0.83 m (M240) ; 0.96 m (M2).
Unit weight	75 kg
Input Voltage	24 – 48 VDC
MAIN PEDESTAL	
Pan / Tilt Range	Pan: Nx 360° ; Tilt: -30° – +80°
Speed	0.01 – 120 °/s
Accuracy	0.016° (1 Arcmin)

| Camera parameters

		ATID-300-EG-C50-T150	ATID-300-EG-C50-T150HD	ATID-300-EG-C52-1T150	ATID-300-EG-C52-T225
DAY / STARLIGHT	Image Sensor	1/1.8" Sony Exmor Global Shutter CMOS			
	Focal Length	6mm-300mm, 50x Optical Zoom		15mm~775mm, 52x Optical Zoom	
	DORI Distance (Human)	Det': 3610m; Obs': 1432m; Rec': 722m; Ide': 361m		Det': 9,026m; Obs': 3,582m ; Rec': 1,805m; Ide': 903m	
	Aperture	F1.4~F4.5		F2.8~F8.2	
	Field of View	H: 26.5°~0.52°, V: 20°~0.4°, D: 32.8°~0.6°			
	Resolution	50Hz: 25fps@3Mp(2048×1536), 25fps@2Mp(1920×1080), 30fps@2MP(1920×1080)		50Hz: 25fps: @3Mp(2048×1536), @2Mp(1920×1080) 60Hz: 30fps: @3Mp(2048×1536), @2Mp(1920×1080)	
	Network Protocol	RTSP, TCP			
	Communication Protocol	SONY VISCA, Pleco D/P			
Day / Night	Electrical, ICR (Auto/Manual)				
THERMAL	Image Sensor	Uncooled VOx microbolometer			
	Resolution	50Hz: 25fps@(704x576)	50Hz: 50fps@(1280×1024)	50Hz: 25fps@(704x576)	50Hz: 25fps@(640 x 512)
	Focal Length	30mm~150mm, 5x Optical, 8x digital Zoom	30mm~150mm, 5x Optical, 8x digital Zoom	30mm~150mm, 5x Optical, 8x digital Zoom	25~225mm, 9x Optical, 8x digital Zoom
	Video output	RTSP, HTTPS			
	Pixel size	12 μm			
	Spectral Range	8-14 μm			

- Additional camera type can be added and customized based on customer requirements



Contact us at:

| Radar parameters ES

Input Voltage	+21.5 to +33 VDC, MIL-STD-1275E, +28VDC nominal
Power Consumption	<250 W Operate State
Frequency Band (Ku)	15.4 – 15.7 GHz, 15.7 – 16.6 GHz
RF Transmit Power	160W (52 dBm) nominal, 180W (52.5 dBm) max
Transmit Waveforms	Multiple LFM Bandwidths, Pulsed Doppler
Polarization	Linear, horizontal
Azimuth Coverage	120° Azimuth maximum (±65°)
Elevation Coverage	90° ± 45° Elevation
EIRP	79 dBm (nominal at max gain)
Realized Gain at Broadside	27 dBi (max gain)
UAS Tracking Ranges	Group 1: 2.5 – 4.8 km; Group 2: 4.8 – 6.4 km; Group 3: 6.4 – 11.4 km
Range	0.5 – 30 km (dependent)
Track Acquisition	<1 sec reacquisition
Size	42.5 cm × 33 cm × 18 cm
Weight	17.8 kg
Temperature	-40°C to +65°C typical ambient
Humidity	RH 100%, @ 29.4°C (85°F), non-condensing
Ingress	IP67 rated (dust and immersion)

| Jammer parameters

Frequency Band (*)	433 MHz; 900 MHz; GNSS 1.2 & 1.5 GHz; 2.4 GHz; 5.8 GHz
Coverage	2 km effective range
Power	Power output 10 W

* Additional frequencies can be added and customized based on customer requirements.



Contact us at: