

# COBRA 7.62/12.7mm - cUAS

## Remote controlled Weapon System



COBRA is a cutting-edge Remote-Controlled Weapon System that can be mounted on any type of vehicle or platform.

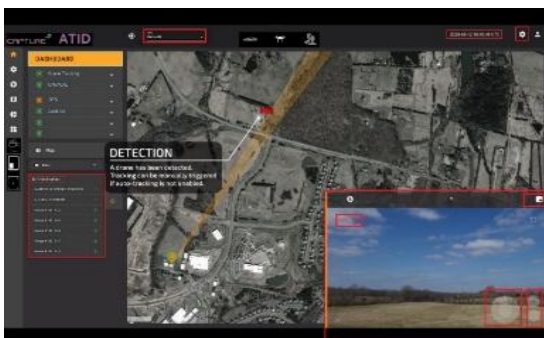


\* The picture is for illustration purpose only, weapon and ammunition are not provided.

### Key Features

- Micro-Doppler detection and differentiation of both drones & birds
- Operating in K band
- UAV Detection < 2km
- Multi classification capability in Realtime
- Optical tracking: Day/Night and Thermal
- 360° tracking system, GEO Heading
- Lightweight and compact gimbal
- Operates up to 50 caliber (12.7) machine guns
- Stabilized system - Designed for dynamic or static operation; Inertial stabilization
- GUI detection and tracking with different modes: Manual | Semi Auto | Auto
- Equipped with Electro-Optical Gimbal IO/IR

**Equipped with a built-in C2 graphical user interface, and powered by AI analytics**



- Picture in picture video
- Automatic object tracking
- Moving map software

## | System parameters

### GENERAL

Dimensions	103 x 124 x 80 cm ; 135 x 124 x 80 cm (M240) ; 178 x 124 x 80 cm (M2).
Rotation Diameter	0.83 m ; 0.83 m (M240) ; 0.96 m (M2).
Unit weight	75 kg
Input Voltage	24 – 48 VDC

### MAIN PEDESTAL

Pan / Tilt Range	Pan: Nx 360° ; Tilt: -30° – +80°
Speed	0.01 – 120 °/s
Accuracy	0.016° (1 Arcmin)

## | Camera parameters

		ATID-300-EG-C50-T150	ATID-300-EG-C50-T150HD	ATID-300-EG-C52-1T150	ATID-300-EG-C52-T225
DAY / STARLIGHT	Image Sensor	1/1.8" Sony Exmor Global Shutter CMOS			
	Focal Length	6mm-300mm, 50x Optical Zoom		15mm~775mm, 52x Optical Zoom	
	DORI Distance (Human)	Det': 3610m; Obs': 1432m; Rec': 722m; Ide': 361m		Det': 9,026m; Obs': 3,582m ; Rec': 1,805m; Ide': 903m	
	Aperture	F1.4~F4.5		F2.8~F8.2	
	Field of View	H: 26.5°~0.52°, V: 20°~0.4°, D: 32.8°~0.6°			
	Resolution	50Hz: 25fps@3Mp(2048x1536), 25fps@2Mp(1920x1080), 30fps@2MP(1920x1080)		50Hz: 25fps: @3Mp(2048x1536), @2Mp(1920x1080) 60Hz: 30fps: @3Mp(2048x1536), @2Mp(1920x1080)	
	Network Protocol	RTSP, TCP			
	Communication Protocol	SONY VISCA, Pleco D/P			
Day / Night	Electrical, ICR (Auto/Manual)				
THERMAL	Image Sensor	Uncooled VOx microbolometer			
	Resolution	50Hz: 25fps@(704x576)	50Hz: 50fps@(1280x1024)	50Hz: 25fps@(704x576)	50Hz: 25fps@(640 x 512)
	Focal Length	30mm~150mm, 5x Optical, 8x digital Zoom	30mm~150mm, 5x Optical, 8x digital Zoom	30mm~150mm, 5x Optical, 8x digital Zoom	25~225mm, 9x Optical, 8x digital Zoom
	Video output	RTSP, HTTPS			
	Pixel size	12 μm			
	Spectral Range	8-14 μm			

- Additional camera type can be added and customized based on customer requirement



### Contact us at:

## | Radar parameters EG

Instrumented Range	6 km
Range (sUAV)	> 1 km (Phantom 4)
Range (vehicle)	> 3.5 km
Range (human)	> 2.2 km
Field of view	120° azimuth x 80° elevation
Angular resolution	2° azimuth x 6° elevation
Scan volume	~1 Hz for 120° az x 60° el volume
Search update rate	New tracks acquired <1 sec
Track acquisition rate	Tracks updated up to 10 Hz while radar scans rest of FOV
Search While Track	Up to 20 simultaneous tracks
Max tracks	Operational modes for humans & UAVs
Size	20.3 cm x 16.3 cm x 4 cm
Weight	1.25 kg (2.75 lbs)
Power	< 50 W (Operating), < 8 W (Hot standby)
Operating voltage	DC +15 V to +28 V (US), DC +15 V to +24 V (INTL)
Operating temp	-40°C to +75°C
Weather Protection	IP67
Control I/O	Gigabit Ethernet
Frequency	24.05 - 24.25 GHz (multi-channel)

The picture is for illustration purpose only, weapon and ammunition are not provided.



**Contact us at:**

CAPTURE SYSTEMS GROUP INC

6555 Sims Drive, Sterling Heights, MI 48313

+1-586-838-4310

capture-sys.com